

# Turning a Photo into an Oil Painting

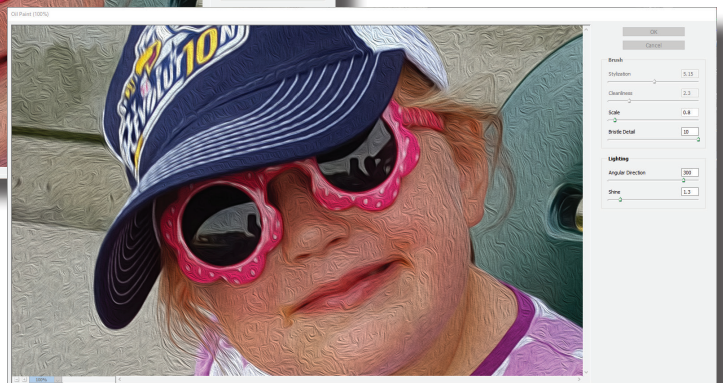
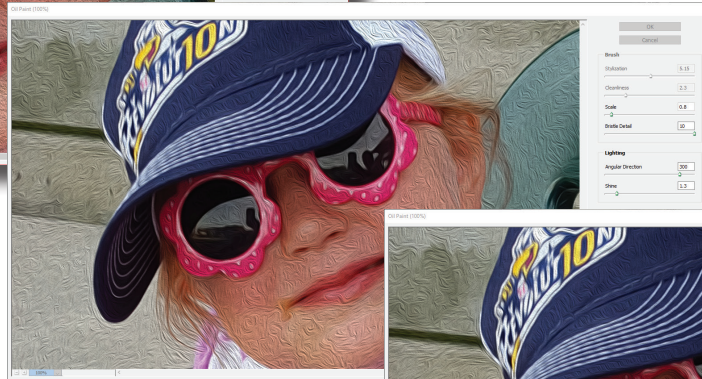
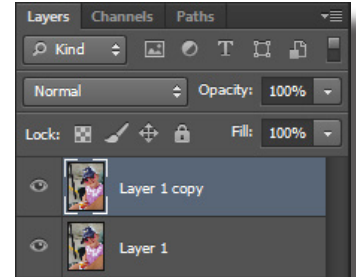


1. Open an image in Photoshop.

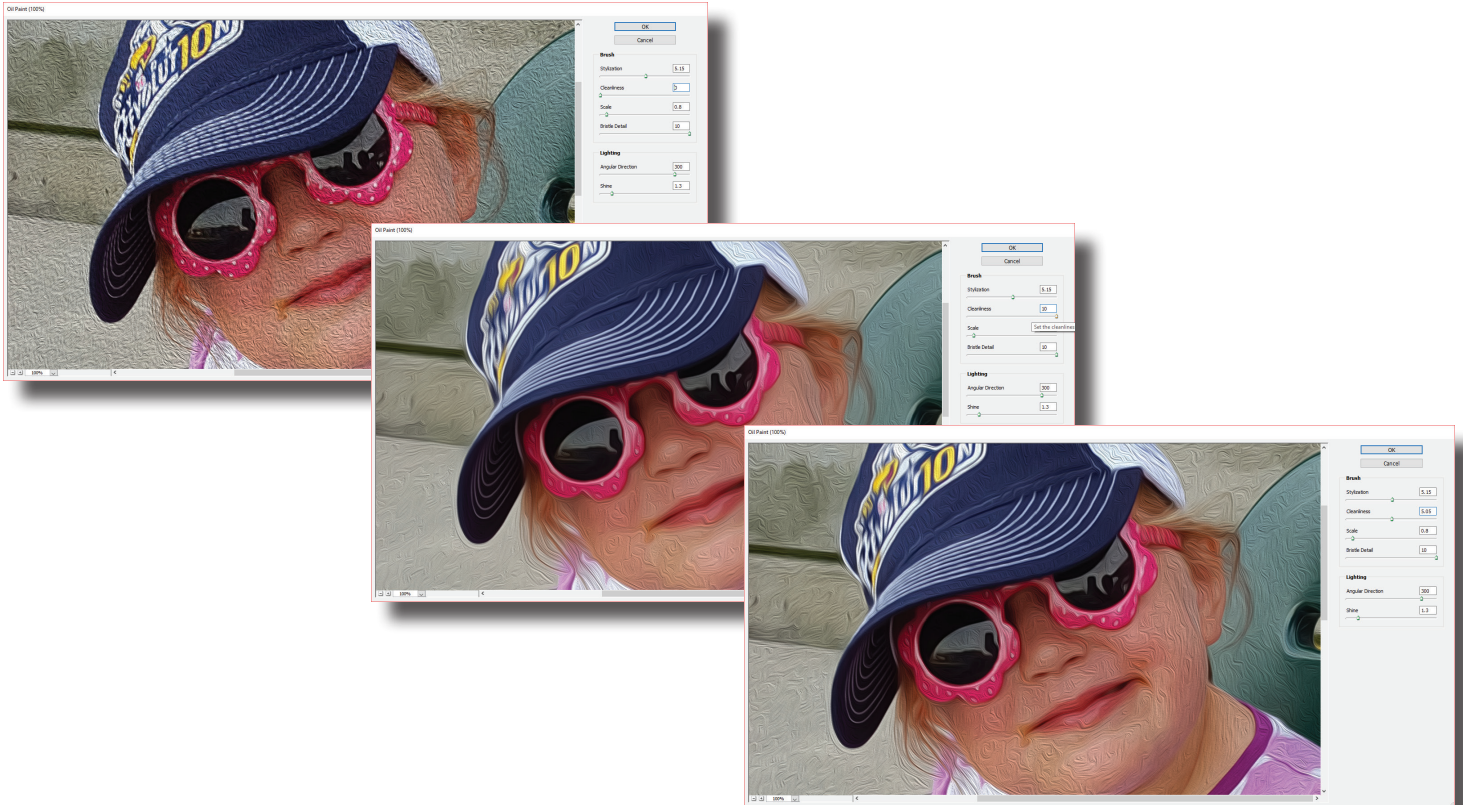
2. Press Ctrl J to duplicate the photo on a new layer. This while provide a before and after example of the effect and allow an easy roll back it doesn't turn out well.

3. Choose Filter>Oil Paint. A new dialog box will appear. Zoom in to 100% so that it's easier to see the detail of how the effect changes the picture. The detail should still be pretty clear while still looking like a brushed painting.

4. There is quite a bit that can be changed in this dialog box. In the Brush section, stylization changes the how small and hard the brush strokes are. When along the left side, the brush will be tiny with more noise appearing to emulate many strokes made with a small brush. It almost appears as though it's been painted on a course wall when it's at 0.1. On the other end of the slider, when at 10 the strokes look longer and wavier. The best mix often lies somewhere between these two extremes.



5. Cleanliness essentially controls the detail seen in the painting. Taking the slider to the left will leave the faux painting with a more realistic look while moving to the right will make it more soft and handmade, like a real painting.

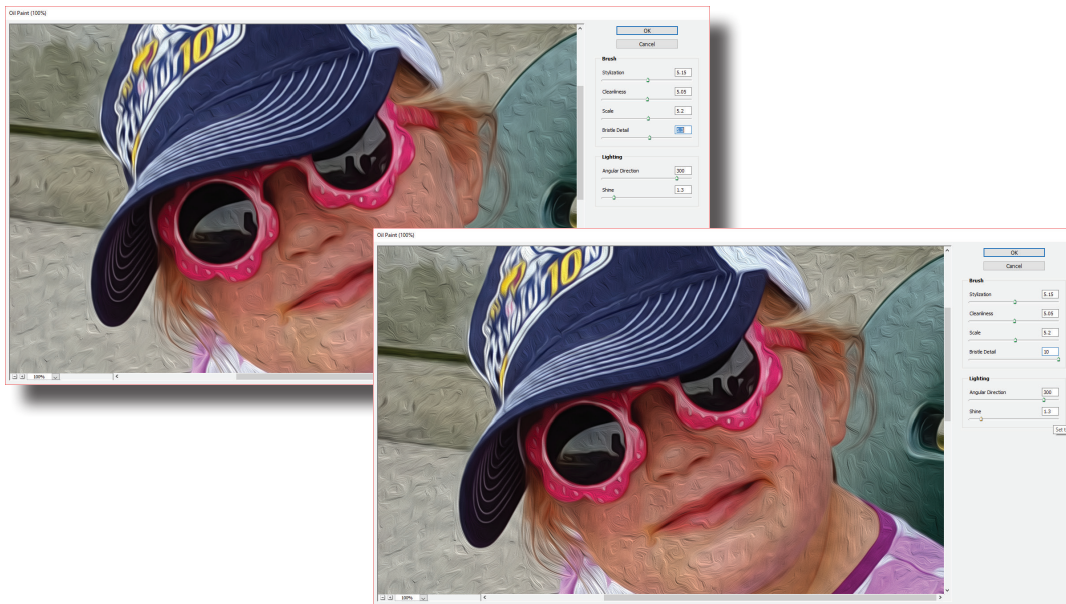


6. Moving down the list, Scale changes the size of your brush; thin brush on the left, extremely thick brush on the right.





7. Bristle detail makes things look sharper in the image. When the slider is at the left slide the bristles detail dissipate. At the right edge there is more streaks to emulate bristles dragging on the canvas.



8. Under the lighting section, Angular Distortion simply changes the angle of the light that hits the brush strokes. Drag it around a bit and get a feel for how it changes the direction.



9. The final slider is Shine. When the slider is at the left the image feels more flat and like it has less edges. Be careful moving it to the right too far... it can make the image really ugly if it's used to its full capability.



10. After dragging the sliders and learning how they work, set each until it looks good. It's typically best to choose settings that make it actually look like a painting and not just give the subtle feel of a painting. Click OK when satisfied.

11. If the effect is too strong, choose File>Fade and drag the opacity slider down a bit.

12. Save the file and it's finished!

Before



After

